



**ANGEL  
XPRESS**  
FOUNDATION

---

**ANNUAL  
REPORT  
2018-19**

## INDEX

---

Founders & Co-Founders Note.....	3
Mission & Vision.....	6
Key Programs:	
• Free Learning Centre (FLC).....	7
• Youth Engagement Program (YEP).....	8
• Social Emotional Learning (SEL).....	9
Teaching Methodology.....	10
Impact: Grade 10 Results.....	11
Impact: Student Happiness and Lifetime Follow-up.....	13
AXF & Sustainable Development Goals (SDGs).....	14
Volunteer Engagement: Happiness Index.....	16
Highlights 2019.....	17
Awards & Recognition.....	21
Endline Assessment Review.....	22
The Future.....	41
Financial Report.....	42
Annual Report 2017-18.....	42
AXF Presentation.....	42
Our Supporters.....	43

## Founders Note: Anubha Sharma

---



Every once in a while a sane voice halts us on our tracks, I recently heard the child activist Greta Thurnberg say – “Our civilization is being sacrificed so a small number of people can continue to make enormous amounts of money.. “

I firmly believe that our relentless pursuit of prosperity at any cost is self-defeating. I resonate with what this child is saying and it is not just our biosphere that is being sacrificed, it is also the rights of citizens, especially in a developing nation like India where equal opportunity remains unattainable for over 70% of our population.

My work within the social sector largely with underprivileged entities has me concerned about several issues in our country. The Below Poverty Line (BPL) numbers in India were 363 million in 2018, significantly higher than 269 million in 2011-12. Evidently, a large group of people are falling behind, unable to participate or benefit from the country's strong economic growth. We have ranked 132 out of 152 countries in our efforts in reducing inequality. In fact while both India &

China have been on the high economic growth path for several decades now, China despite its history of human rights violation has managed to ensure adequate delivery of basic services like health care, infrastructure and quality education that is owed by any government thus ensuring the benefits of its economic growth are flowing down to deliver equal opportunities, something in which we have failed.

Without always waiting for governments to act, we as socially conscious citizens can also take action to create a more equitable society. Angel Xpress Foundation is doing just that from 17 locations across Mumbai. Formed with the idea of transforming behavior of underprivileged children, AXF taps educated, capable and underutilized human resources available in society. Our Free Learning Center program is designed to enable citizens to easily adopt volunteerism and community service as a lifestyle choice.

Our volunteers are mostly educated housewives and the actively retired besides students from various educational institutions; we train them to become effective teachers and more importantly enabling them to be impactful leaders and social entrepreneurs. Through this idea communities otherwise living in their own cocoons are interlinked through an empathetic platform thus creating a bridge between different economic classes.

Our intent goes beyond improving academic abilities in English & Math, we aim to provide values, life-skills and a joyful childhood experience to first generation learners from financially weak homes. We are creating a safe space for children to learn and interact with educated adults who they would have no access to otherwise; the kind of people who can guide them towards responsible adulthood, empower them and enable

them to create prosperity for themselves and their families. The children gain a platform to live life through a variety of fun and educational experiences including movies in multiplexes, visits to museums, sporting events, talent contests etc. Workshops are conducted on critical issues like health, hygiene, safety, mindfulness, social emotional learning, academic and career counseling. Volunteers organize a daily healthy snack, medical dental camps, redistribution drives for clothes, shoes, toys and other essential items to further bridge the divide.

Today, our beneficiaries include over 500 volunteering changemakers who support nearly 2000 children each day across our programs functional in 17 locations, across Mumbai. Our volunteers wholeheartedly express that being a part of the AXF family is extremely fulfilling, they develop deep bonds with the children and their co-volunteers, receiving a great deal of acknowledgement and appreciation from everyone around, in short they say they take back far more than what they give. This solution can be adopted in every urban center across India, beginning with Mumbai to create a more equitable society

With the hope that my words resonate with you, the ones who are already a part of our family continue helping our cause grow for the years to come and those who wish to join, we await to welcome you onboard the good karma xpress!

We express our gratitude and thanks to all our donors for supporting our cause. A special mention of our awesome CSR partners. Larsen & Toubro, Voltas, Raymond, Matrix Entertainment, Kangaroo Kids, BoB Financial, Being Human and Umid A Hope Foundation

Anubha Sharma  
Fellow Changemaker

## Co-founders Note: Beenaa Advani

---



“Not all Angels reside in heaven, some walk the earth just Like You and Me”

I used to run a successful Preschool in Mumbai but soon the disparity between children who could afford education and those who couldn't, started to bother me. I tussled with these thoughts of confusion every day, searching for answers. Talking of the power of manifestation!! A chance meeting with Anubha led to the forming of the Angel Xpress Foundation an NGO that educates underprivileged children. And so began OUR journey! From one centre of 18 boys and girls, today we have 17 centres across Mumbai with over 2000 children from all walks of life and 500 volunteers give their time to educate, nurture and inspire our students.

I have always followed my heart and the joy of providing for these children has been an extremely fulfilling one. In return, the deep satisfaction I get when these students express their gratitude and joy is difficult to put in words. Many of these children come from disruptive homes and we at Angel Xpress do our utmost best to give them as much joy as possible.

Our volunteers lend a patient ear at all times. And we do whatever we can to put a smile on each child's face. We truly believe in the overall development of our children by using various modes of teaching which help aid not only their personality but also confidence. Our children study with us till Std 9 and recently we've added orientation and supplementary education courses to prepare them for their years ahead.

Our programs aim at inclusiveness, thereby fostering and nurturing our children, understanding who they are, accepting them whilst developing a sense of equality in them, instilling a sense of moral compass, making them emotionally and sound human beings. As each day passes we are making a progress one child at a time, one volunteer at a time, one day at a time ! I believe that we are paving the way for a healthier society , for a better tomorrow !

I sign off by quoting Daisaku Ikeda, \*What our world most requires now is the kind of education that foster love for humankind, that develops character-that provides an intellectual basis for realization of peace and empowers learners to contribute to and improve society.” And we look forward to continuously reaching out to help wherever we can.

Thank you for believing in our cause, in guiding and supporting us time and again every year..



# Mission and Vision

## ***Our Vision:***

For every child that is mentored to become a responsible adult, there are 10 more waiting to be guided towards a better future. We believe that an involved, educated adult can lead a child to discovering their true potential; and that every child deserves that opportunity.

## ***Our Mission:***

We intend to provide every empathetic adult with volunteering opportunities to act as a mentor for first-generation learners from slums. We want to impact society positively by infusing a love for learning, coupled with a desire to excel and use the best of their abilities in **first generation learners**. We want to do this by teaming up with committed volunteers who also act as loving, enthusiastic mentors, and by enabling them to fulfil their desire of contributing to society – even if it is just for a few hours every week. We want to collaborate as a knowledge partner and supporter of local communities, schools, corporate, government agencies, and other developmental bodies.

In doing this, we are committed to ensuring transparent and honest use of donor money so they know exactly how it is being channelized at any given point of time.

## Key





### **Free Learning Centers (FLC): 7 to 15 year olds**

Our flagship program, The FLC Project enables citizens to offer a range of experiences to school-goers from slums in the neighbourhood.

This program was piloted in 2012, and runs in tandem with academic timelines of Mumbai schools. We started with 18 children and a couple of volunteers, in 2018-19, the program offered daily lessons to nearly 2000 children across **31 batches in 17 locations** across Mumbai with the help of over 500 volunteers.

The AXF Free Learning Center Program is an attempt to engage and aggregate the affluent Mumbai community in support of children from their neighborhood slums to reduce inequality and address lack of opportunity in our society. AXF works with the socially conscious educated who are keen to give back and trains them to become effective teachers and nurturers who

along with AXF appointed managers serve as volunteer teachers to support the FLCs. In a city starved of space where most people end up spending time crowded into tiny rooms, our classes are held in parks giving an opportunity to the children and volunteers to come out of closed spaces, creating a fresh and open learning atmosphere. Under this program we provide the following interventions for school going children from slums

- Daily one hour lessons skill based approach to coaching in English and Math (continuing since 2012)
- A life-skills curriculum to be implemented via storytelling and activities once a week will be added in 2019-20.

### **Youth Engagement Program (YEP): 15 to 18 year olds**

One of the needs that emerged during a user beneficiary survey conducted in 2018 was a need for academic and career guidance as well as counselling for students who were leaving AXF in grades 9 and/or 10. We also found our ex students missed the AXF space and guidance, we realized we were letting them go when they probably needed adult guidance the most as they stepped towards adulthood. We launched YEP in 2018-19 to link education to livelihood and wholesome personality development.

The program starts at grade 9 as students go through a social emotional learning program that is designed to equip them with the emotional strength to deal with various situations he/she may encounter in life and to be a responsible decision maker. Students in grade 10 are provided with all subject coaching for board prep as well as academic counselling, students in grades 11 & 12 go through a number of workshops and interactive sessions covering academic, career counselling and soft skills like spoken english and digital literacy on weekends.

After completing grade 12 they are put through a 100 hour job readiness program in collaboration with Antarang Foundation so they can make informed choices about higher studies and or vocational training. The program is being fine tuned and developed even as we expand the pilot to a few more centers in 2019–20. We have introduced graduation ceremonies and certification for passing students from the FLC program at grade 10 as well as from the YEP after grade 12.







### **Social Emotional Learning (SEL):**

It has increasingly become evident that teaching only literacy and numeracy are not enough for our children to face the challenges of the 21st century. A therapist facilitated intervention, SEL is a tool that kids need to be resilient, to be problem solvers, and to be good people. The AXF SEL program has been curated to ensure holistic development of the child, enabling the child to see their strengths and challenges and help them see their personal competencies they need to develop to be successful.

These competencies help shape and form and further expose them to themselves and others. Social and Emotional Learning helps students better manage their relationships with adults and peers, reduces problems with conduct in the classroom and risk-taking behavior, and has a tangible positive benefit on students' emotional well-being. This program hopes to achieve an end goal of responsible decision making later in life

**A once a week life-skills class is being introduced across all age groups via stories and activities at our FLCs.**

10 crucial Life Skills listed by WHO for children in the 21st century form the basis of our program

- Problem-solving and decision-making skills
- Critical and creative thinking skills
- Communication and interpersonal skills
- Self-awareness and empathy
- Coping with stress and emotions

# Teaching Methodology & Capacity Building

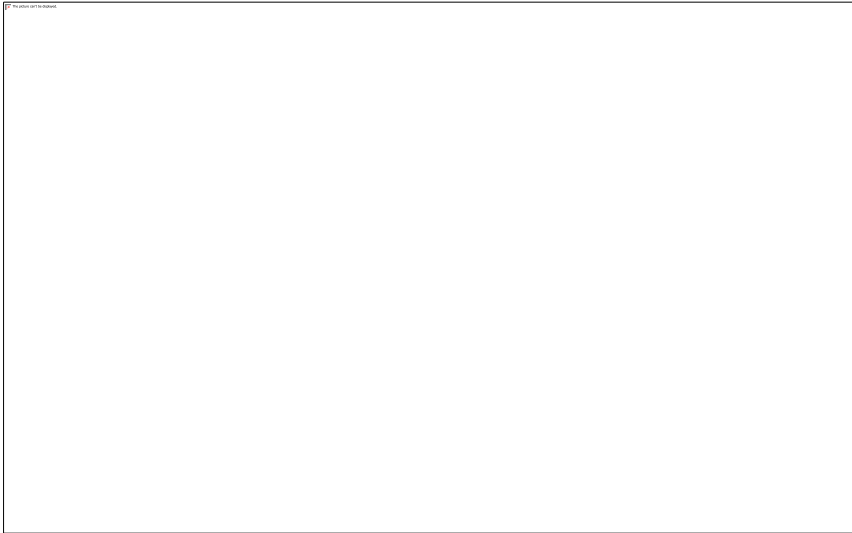
## Curriculum Planning:

- For the new academic year we are introducing Life Skill curriculum based on WHO Life Skill Framework.
- We are mapping our English curriculum to CEFR framework.
- We are redesigning our English Teachers Book.
- We are introducing English workbooks for E2 level and above & Making inhouse workbook for E0 & E1 levels.
- We will be introducing Total physical response in English language teaching to concretize Speaking and Listening skills.
- Volunteers will be trained on Maths, English, Life Skills, Classroom Management & Phonics
- We will be introducing a rubric to assess Writing and Speaking Skills.

Year round trainings, meetings and workshops are planned for improving the teaching outcomes as well as leadership capacity of our core team members at the centers as well as the central team.



## Impact: Grade 10 Results



Previously, when AXF FLC students reached higher grades, they would choose to exit the system so as to attend tuition classes for board exam preparations in grades 8 or 9, however, we are now looking at actively recruiting volunteers for board prep help across our centers. Our AE and Santacruz centers have found volunteers to help 10th grade students with their board exam prep in 2018-19 and the results achieved are far better than an average classroom result of a bmc school.

Most of the AXF Santacruz (SC) students are migrants and first-generation learners and they find it difficult to cope up with academics in higher grades. For the academic session 2018-19, about 30 students regularly attended tutoring classes offered by AXF. Based on the baseline conducted at AXF, most of these students were a grade 3 or 4 level in English (E2) and Math (D). Still many of them performed to the best of their capabilities scored high marks.

This table shows the comparison between the SC students who continued with AXF in grade 10 and those who left post grade 8 or grade 9. The average percentage is not only higher for the group who stayed with AXF but the number of students scoring above 60% is also significantly higher than those who left AXF.

	no of kids	avg %	KT%	above 60%
with axf	30	64%	20%	50%
left axf	13	55%	23%	8%

This feat was made possible because of the efforts put in by a group of dedicated teachers who not only helped students with academics but also kept them motivated. If it was not for the continuous support of the teachers, many would have given up and not even tried to give their

best to pass grade 10. Along with academics, AXF kids were also provided with career counseling and hence currently are in a position to think and choose courses which would prepare them to earn a livelihood in the future.

***The AXF Andheri East batch has put up an extraordinary performance thanks to their dedicated teachers.***

Here are their marks

Nihal- 87%  
Mukesh - 82%  
Sheetal - 84%  
Shweta - 81.6%  
Komal - 80%  
Khushi - 81%  
Adarsh- 76%  
Supriya- 75%  
Anjana - 52%  
Bhanu -40%

***Impact: Student Happiness and Lifetime Follow-up***

---

AXF aspires to support public school students through a community of volunteers that holistically empower students to reach higher levels of English and Mathematics until the Grade 10 or the highest level of English and Mathematics. The student encounters numerous hurdles throughout their journey. Knowing all of this, AXF works harder to provide a holistic approach to improve both the child's literacy and wellbeing by providing educational and career support.



Under the Youth Engagement Program Piloted at our Santacruz center, a 100 hour career ready program was conducted for 23 students who had appeared for their grade 12 exams.

**Please find the detailed program report [here](#).**



# AXF & SDGs

## Sustainable Development Goals



The [Sustainable Development Goals \(SDGs\)](#) are a collection of 17 global goals set by the United Nations General Assembly in 2015 for the year 2030. SDGs provide a shared blueprint for peace and prosperity for people and the planet, now and into the future. At its heart are the 17 goals which are an urgent call for action by all countries - developed and developing - in a global partnership. They

recognize that ending poverty and other deprivations must go hand-in-hand with strategies that improve health and education, reduce inequality, and spur economic growth – all while tackling climate change and working to preserve our oceans and forests.

AXFs role in contributing towards the SDGs: They say it takes a village to raise a child, an adage that has been forgotten in today's times when precious few display a consciousness and co-ownership towards the planet or the community. It is in these times that we have embarked upon a journey to create a section of society which keeps the value of for the benefit of many, for the good of all at its core. Besides creating a society committed to equality through individual participation in developmental goals, Angel Xpress Foundation is committed to creating an aware and responsible future generation.

Our goals are aligned to the UNSDG 2030 goals in that we foster quality education for the undeserved through individual participation in developmental activities through volunteerism thus reducing inequality within the country via redistribution of resources including knowledge. Our teaching content while creating literacy and numeracy, covers topics like gender equality, conservation of the environment and responsible consumption and WHO mandated life skills which serves to create awareness and is a learning opportunity for volunteers, student beneficiaries and their families. The career focused approach in our youth engagement program aims at sustainable livelihood for our students, including soft skills, industry exposure, academic and vocational guidance. AXF contributes towards these global goals by working towards:



**Goal 4: Quality Education:** At AXF, we recognize that children living in slums have limited opportunity to break free from the cycle of poverty with access to poor quality education being one of the primary reasons for inability to access opportunities for sustained livelihood and prosperity for themselves and their families.

AXF has successfully implemented an idea that uses the coexistence of slums and high-rises to bridge the social divide, in Mumbai, India which is home to over 24 million people of which 41.3% live in slums. Our “Free Learning Center Program”, recruits and trains socially conscious educated citizens from affluent backgrounds, home makers and active retirees to set up a community service program in their neighborhood. Here, children from neighboring slums are tutored, mentored by educated volunteers till they are gainfully employed. Volunteer groups receive resources and extensive training from AXF for skill development.



**GOAL 5: Gender Equality:** Empowering women is among our core objectives. Gender discrimination and need for equality is being included in our life skills curriculum, We have been working on counseling parents on better parenting and equal rights for the girl child through interactive sessions during our PTAs. We are presently working on creating workshops for parents on these topics. Enabling women from affluent homes; largely home makers not participating in economic activity otherwise, with the capacity to participate in nation building activities, creates an opportunity for them to bring satisfaction and appreciation from the children, society, co-volunteers, bringing relevance, power and dignity into their lives.



**Goal 10: Reduced Inequalities:** Through our unique model of citizen participation for social good, AXF has managed to find a way to by-pass the lack of access to opportunities to learn and thus attain sustainable livelihood for the underprivileged. Through our free learning center format, we have managed to interlink communities otherwise living in their own cocoons through an empathetic platform thus creating a bridge between different economic classes. AXF enables citizens to easily adopt volunteerism and community service as a lifestyle choice thus providing them with an opportunity to nurture underserved children by building in them an interest and capacity to learn. A daily snack, fun and educational outings, redistribution drives for essential items like clothes, shoes, toys, workshops on important topics like health, hygiene, sexual safety, to participate in sporting, cultural events and medical dental camps further help bridge the divide. A youth engagement program has been introduced for academic, vocational counselling and skill based training through a variety of

collaborations.

## ***Volunteer Engagement: Happiness Index Survey***

Volunteers are the backbone of the AXF platform. They perform most of the positions inside the organisation, and most importantly, the majority of the volunteers perform as teachers. Since AXF started operating in 2012, it has grown to have more than 500 volunteers spread throughout 17 locations in Mumbai. To better understand the volunteers, their experience in AXF and areas of opportunities, students from Macquarie University, Sydney, Australia, conducted a survey with our volunteers. We are happy to share with you some of the key highlights:

**General:** The average person who volunteers in AXF is between 37 and 49 years old, is a homemaker or a retiree, and has had premium education (40% have a university degree and 55% have postgraduate credentials). Besides that, the big majority of the volunteers are females (90% of them). These shows that the average volunteer of AXF are mature affluent women who had a premium education and want to contribute to the community.

**Reasons for volunteering:** The survey showed that the two things that volunteers value the most out of collaborating with AXF are the sense of purpose that it gives to them and the difference they feel they make to the community. Both reasons are very personal and appeal to the satisfaction that a human being gets from volunteering. Besides that, they appreciate the fact that they can feel useful by applying the skills they learned through their education or previous jobs, as well as learning new skills.

**Feeling of appreciation:** 93% of our volunteer family feel their work is “appreciated or very appreciated” and that they get lots of recognition from their peers and AXF staff.

**Impact on society:** When asked about how much impact do volunteers feel their job has had on a scale of 0 to 10, 50% of them used a high grade (8, 9 or 10).

**Scope of improvement:** Volunteers request more training than they are currently getting. Furthermore, they mentioned that they would like to have more technology to assist them with their teaching.

## Highlights 2019

---



Indian Ocean pays tribute to AXF volunteers on our 7th Annual Day titled "Day of Grace"



1st Graduation Day at AXF for our higher grades with Mr. Pralhad





Capacity Development &  
Training for AYE

Annual Impact & Planning with  
volunteers and board members

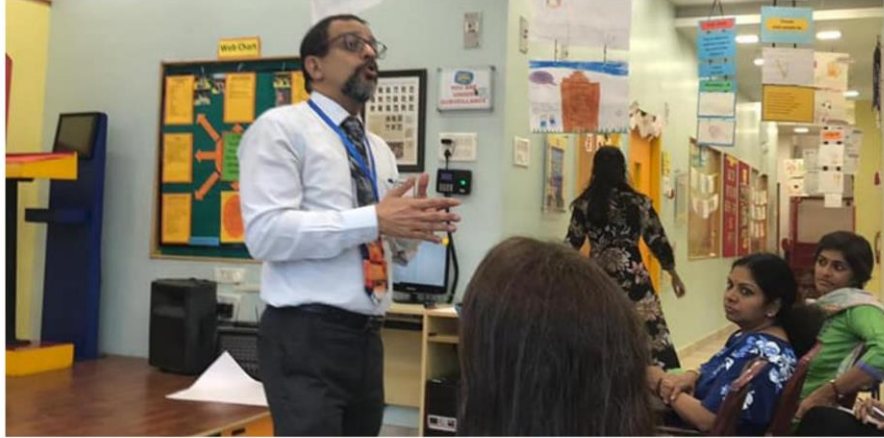




Another year in partnership with  
Reliance Foundation- AXF kids

Every year our kids participate in the joy of  
giving week





Continuous capacity building & development for volunteers-  
This session was led by Dr. Kersi Bomi Chavda a

Celeb Watch: YEP kids do a day out with Moin Bhai from Gully Boy while AXF Juhu kids had an interactive session with Actor Chandan Anand who is well-known for his experience on TV, theatre, film, and ads. He spoke to the kids about his journey and encouraged them to

# Awards & Recognition



Our Founders have received several awards and acknowledgement for their work this year, with the most interesting being conferred the title of ***“Exceptional Women of Excellence” at the Women Economic Forum 2019***. Here our work was referred to as the “UBER for Good” which we felt was an apt capturing of the work that we do at aggregating the well intentioned and enabling them to perform impactful community service.

***Anubha Sharma receiving the award  
at WEF 2019 in New Delhi, India***



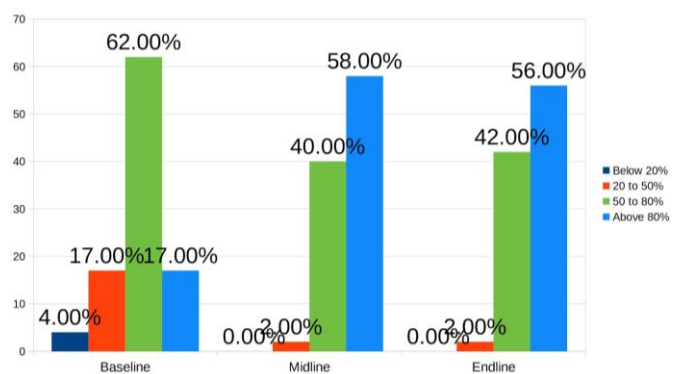
***Beena Advani & Anubha Sharma receiving  
the Social Initiative award for AXF at  
GB Entrepreneurs Awards in Mumbai, India***

# Endline Assessments: Results & Review

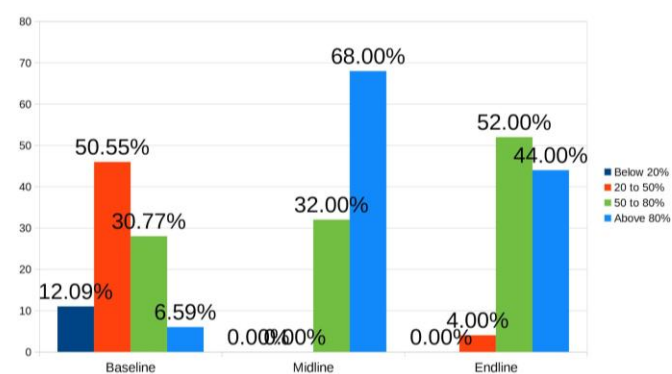
## Overall Endline Analysis 2018-19:

- Out of 1647 students who had given the endline exam 484 students have scored above 80% in Maths, 412 students have scored above 80% in English. Note - The new centers that launched mid year and the 9th and 10th grade students who are undergoing all subject coaching have not participated in endline assessments.
- 159 students are moving to the next level in maths & 247 students are moving to the next level in English. Most students are held back in the same level despite high scores to ensure course completion, we encourage a teacher's focus on ensuring children acquire the competency well instead of on course completion.
- 29% of students have scored above 80% in Maths
- 25% of students have scored above 80% in English
- 10% of students are moving to the next level in Maths
- 15% of students are moving to the next level in English.
- The average reading level of all AXF students after endline reading assessment is 1.95 i.e AXF on average AXF students are able to read at 2nd-grade level. Most new students that join AXF have extremely poor reading skills when they join, over 80% are close to 0 or below kindergarten level, an average reading level of grade 2 is significant progress given over 1000 children out of the 2000 total that we have were added to the system in the last 2 years.

Scroll down for a comparative analysis for our FLCs for the academic performance of the children in 2018-19.



English Overall	Total	Below 20%	20-50%	50-80%	Above 80%	Absent	Left
Baseline	63	2	9	33	9	10	-
Midline	63	0	1	21	30	11	-
Endline	63	0	1	22	29	11	-



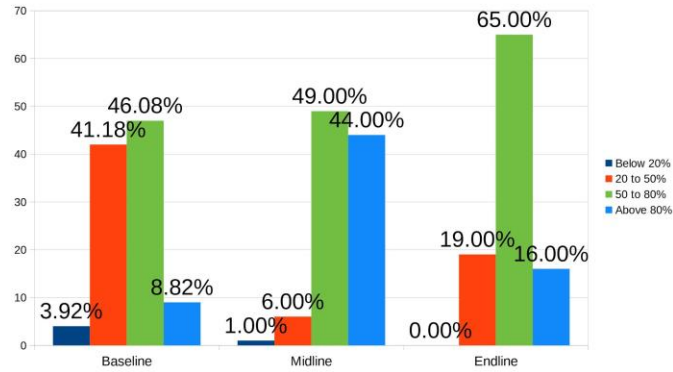
Maths - Overall	Total	Below 20%	20-50%	50-80%	Above 80%	Absent	Left
Baseline	63	6	29	15	3	10	-
Midline	63	0	0	17	36	10	-
Endline	63	0	2	27	23	11	-

For a detailed managers report & academic analysis for AXF Amboli, please [click here](#)

AXF ANDHERI EAST

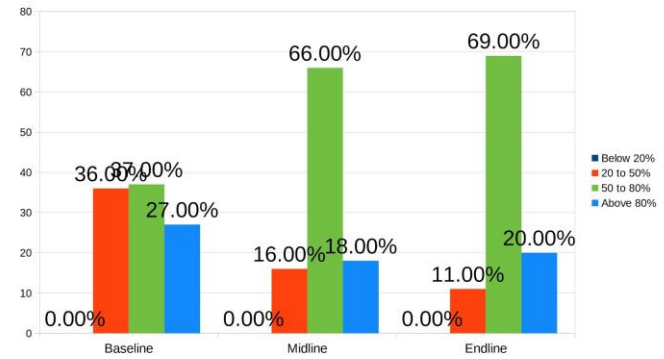


Andheri English Baseline, Midline & Endline Comparison



English Overall	Total	Below 20%	20-50%	50-80%	Above 80%	Absent	Left
Baseline	122	4	43	48	8	-	19
Midline	103	1	6	49	44	3	-
Endline	103	0	19	65	16	-	3

Andheri Maths Baseline, Midline & Endline Comparison

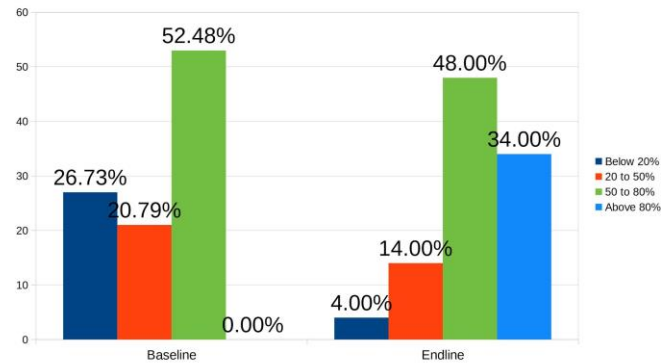


Maths – Overall	Total	Below 20%	20-50%	50-80%	Above 80%	Absent	Left
Baseline	122	0	36	38	28	1	19
Midline	103	0	16	68	19	-	-
Endline	103	0	11	69	20	0	3

For a detailed managers report & academic analysis for AXF Andheri East, please [click here](#)

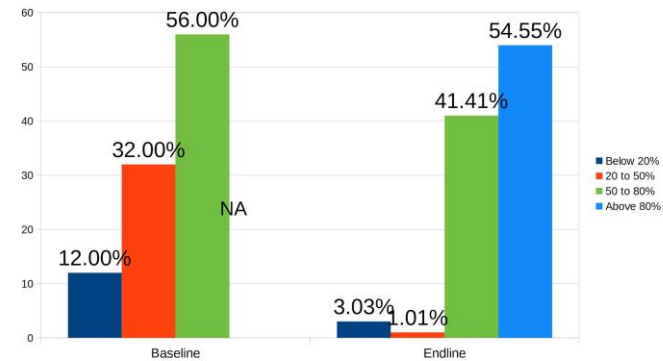
AXF BHAKTI PARK

Bakhti Park English Baseline,Midline & Endline Comparison



English Overall	Total	Below 20%	20-50%	50-80%	Above 80%	Absent	Left
Baseline	78	21	16	41	-	-	-
Midline	NA	NA	NA	NA	NA	NA	NA
Endline	78	3	10	34	24	7	-

Bakhti Park Maths Baseline,Midline & Endline Comparison

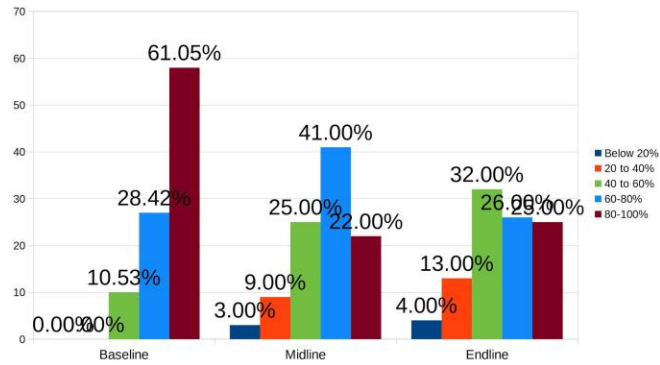


Maths – Overall	Total	Below 20%	20-50%	50-80%	Above 80%	Absent	Left
Baseline	78	9	25	44	-	-	-
Midline	NA	NA	NA	NA	NA	NA	NA
Endline	78	2	1	29	38	8	-

For a detailed managers report & academic analysis for AXF Bhakti Park, please [click here](#)

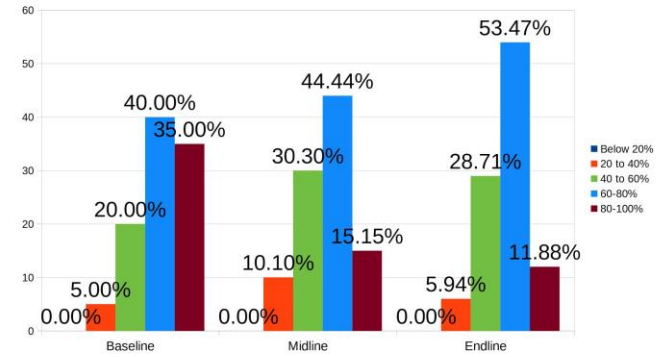
## AXF BANDSTAND

Bandstand English Baseline, Midline & Endline Comparison



English Overall	Total	Below 20%	20-40%	40-60%	60-80%	80-100%	Absent	Left
Baseline	67	0	0	7	18	39	3	-
Midline	67	2	6	16	26	14	3	-
Endline	67	2	7	17	14	13	14	-

Bandstand Maths Baseline, Midline & Endline Comparison

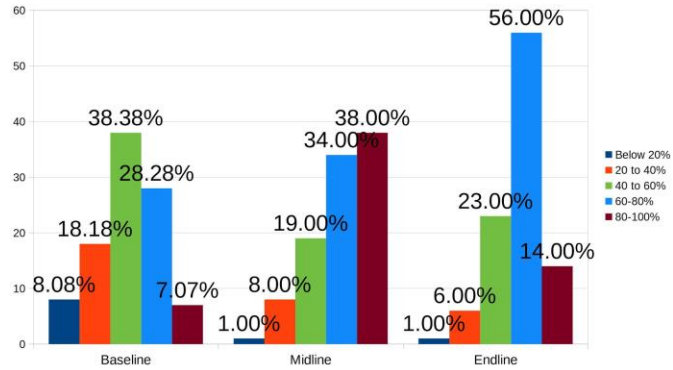


Maths – Overall	Total	Below 20%	20-40%	40-60%	60-80%	80-100%	Absent	Left
Baseline	67	0	3	11	22	19	12	-
Midline	67	0	6	18	27	9	7	-
Endline	67	0	3	15	28	6	15	-

For a detailed managers report & academic analysis for AXF Bandstand, please [click here](#)

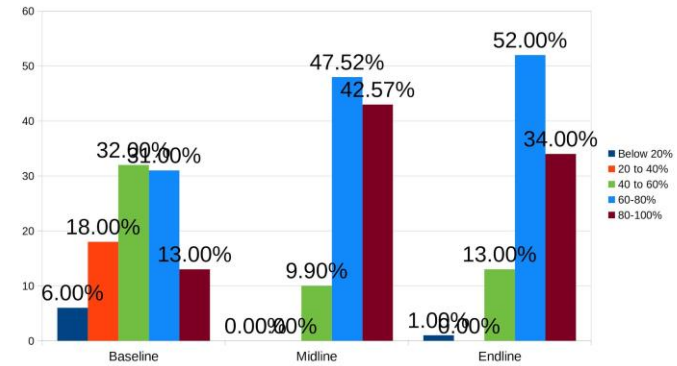
AXF SANTACRUZ BK BATCH 1

SC BK1 English Baseline, Midline & Endline Comparison



English Overall	Total	Below 20%	20-40%	40-60%	60-80%	80-100%	Absent	Left
Baseline	95	8	17	36	27	7	-	-
Midline	95	1	7	18	32	35	2	-
Endline	95	1	5	20	48	12	9	-

SC BK1 Maths Baseline, Midline & Endline Comparison

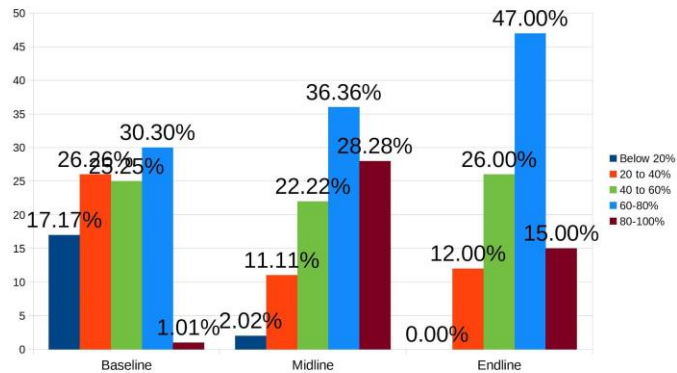


Maths - Overall	Total	Below 20%	20-40%	40-60%	60-80%	80-100%	Absent	Left
Baseline	95	6	17	31	29	12	-	-
Midline	95	0	0	9	45	40	1	-
Endline	95	1	0	11	45	30	8	-

For a detailed managers report & academic analysis for AXF SC BK1, please [click here](#)

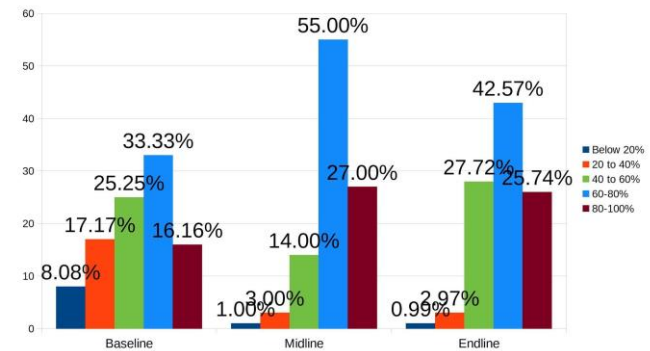
AXF SANTACRUZ BK BATCH 2

SC BK2 English Baseline,Midline & Endline Comparison



English Overall	Total	Below 20%	20-40%	40-60%	60-80%	80-100%	Absent	Left
Baseline	102	17	26	25	30	1	3	-
Midline	102	2	11	22	36	28	3	-
Endline	102	0	11	24	43	14	10	-

SC BK2 Maths Baseline,Midline & Endline Comparison



Maths – Overall	Total	Below 20%	20-40%	40-60%	60-80%	80-100%	Absent	Left
Baseline	102	8	17	25	33	16	3	-
Midline	102	1	3	14	56	27	1	-
Endline	102	1	3	26	40	24	8	-

For a detailed managers report & academic analysis for AXF SC BK2, please [click here](#)

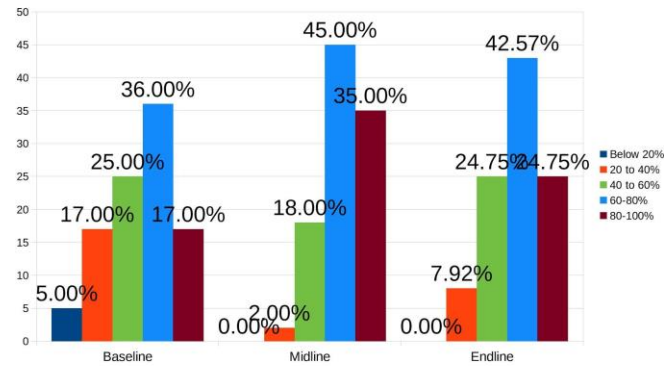
## AXF SANTACRUZ BK EVENING

FLC Core Team:

Established in :

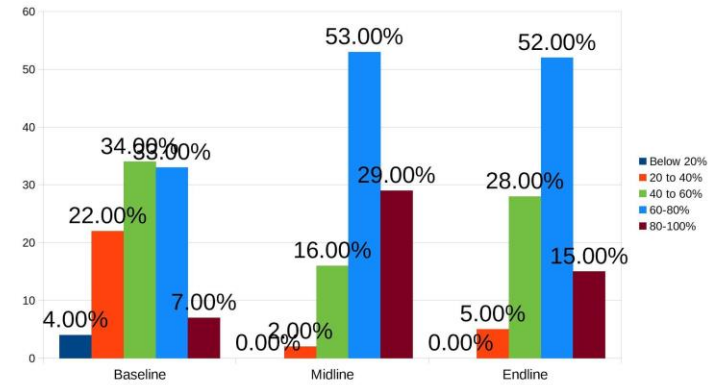


SC BKE English Baseline, Midline & Endline Comparison



English Overall	Total	Below 20%	20-40%	40-60%	60-80%	80-100%	Absent	Left
Baseline	106	5	18	26	37	18	2	-
Midline	106	0	2	19	47	37	1	-
Endline	106	0	8	25	44	25	4	-

SC BKE Maths Baseline, Midline & Endline Comparison

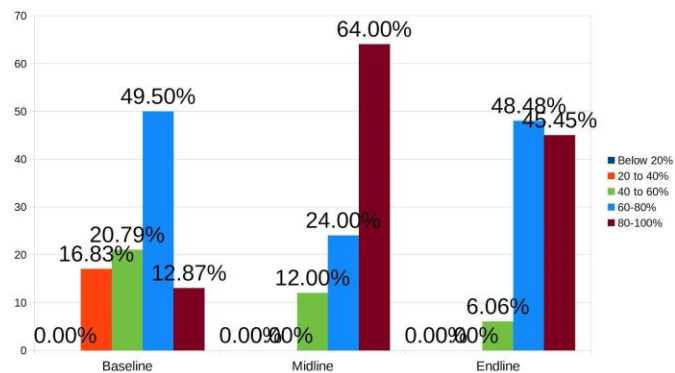


Maths – Overall	Total	Below 20%	20-40%	40-60%	60-80%	80-100%	Absent	Left
Baseline	106	4	23	36	35	7	1	-
Midline	106	0	2	17	55	30	2	-
Endline	106	0	5	29	54	15	3	-

For a detailed managers report & academic analysis for AXF SC BKE, please [click here](#)

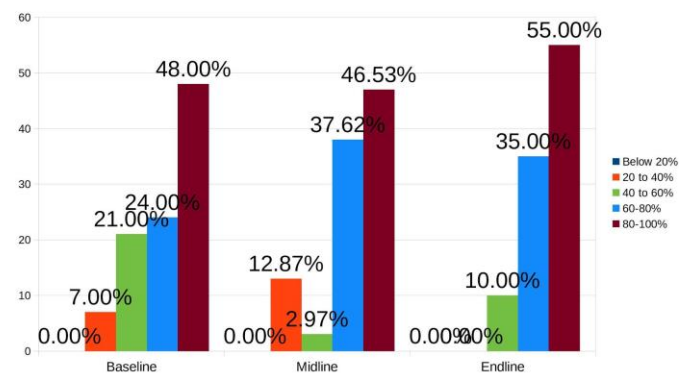
AXF SANTACRUZ RK

SC RKM Maths Baseline, Midline & Endline Comparison



Maths – Overall	Total	Below 20%	20-40%	40-60%	60-80%	80-100%	Absent	Left
Baseline	33	0	4	5	12	3	9	-
Midline	33	0	0	4	8	21	-	-
Endline	33	0	0	2	15	14	2	-

SC RKM English Baseline, Midline & Endline Comparison

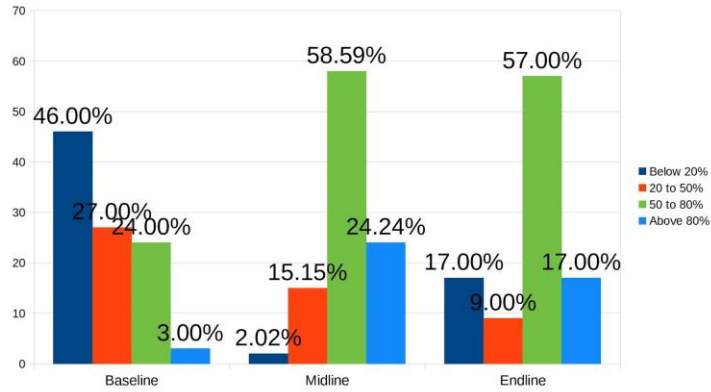


English Overall	Total	Below 20%	20-40%	40-60%	60-80%	80-100%	Absent	Left
Baseline	33	0	2	6	7	14	4	-
Midline	33	0	4	1	12	15	1	-
Endline	33	0	0	3	11	17	2	-

For a detailed managers report & academic analysis for AXF SC RK, please [click here](#)

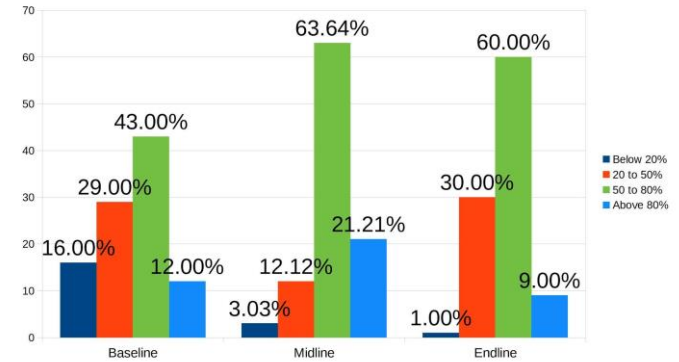
AXF COLABA

### Colaba English Baseline, Midline & Endline Comparison



English Overall	Total	Below 20%	20-50%	50-80%	Above 80%	Absent	Left
Baseline	104	32	19	17	2	34	-
Midline	104	2	13	50	21	18	-
Endline	104	18	9	59	17	1	-

### Colaba Maths Baseline, Midline & Endline Comparison

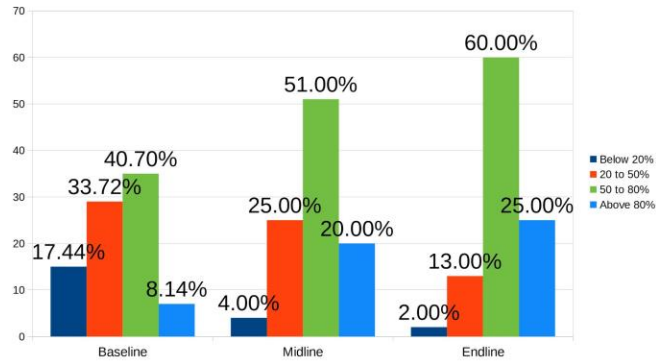


Maths – Overall	Total	Below 20%	20-50%	50-80%	Above 80%	Absent	Left
Baseline	104	9	17	25	7	46	-
Midline	104	3	11	56	19	15	-
Endline	104	1	28	56	9	10	-

For a detailed managers report & academic analysis for AXF Colaba, please [click here](#)

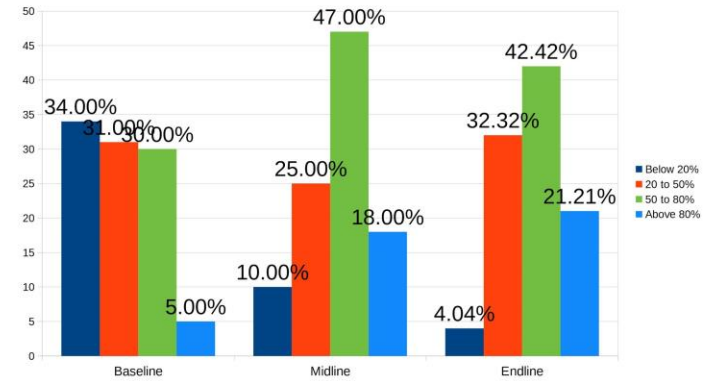
**AXF GOREGAON (morning batch)**

Goregoan Maths Baseline, Midline & Endline Comparison



Maths – Overall	Total	Below 20%	20-50%	50-80%	Above 80%	Absent	Left
Baseline	68	10	20	24	9	5	-
Midline	68	2	13	26	10	0	17
Endline	68	1	6	28	12	4	17

Goregoan Morning English Baseline, Midline & Endline Comparison



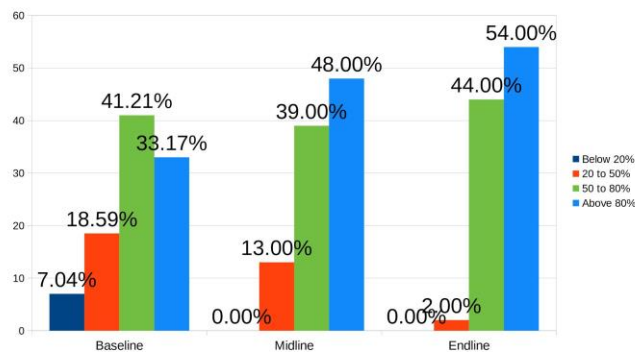
English Overall	Total	Below 20%	20-50%	50-80%	Above 80%	Absent	Left
Baseline	68	22	20	19	3	4	-
Midline	68	5	13	24	9	-	17
Endline	68	2	15	20	10	4	17

For a detailed managers report & academic analysis for AXF Goregaon, please [click here](#)

**AXF GOREGAON (afternoon batch)**

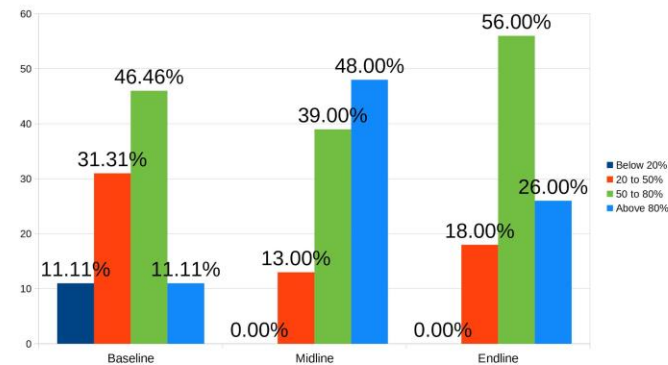


Goregoan Afternoon Maths Baseline, Midline & Endline Comparison



<b>Maths – Overall</b>	Total	Below 20%	20-50%	50-80%	Above 80%	Absent	Left
Baseline	71	5	13	29	23	1	-
Midline	71	0	9	27	33	2	-
Endline	71	0	1	29	35	1	5

Goregoan Afternoon English Baseline, Midline & Endline Comparison

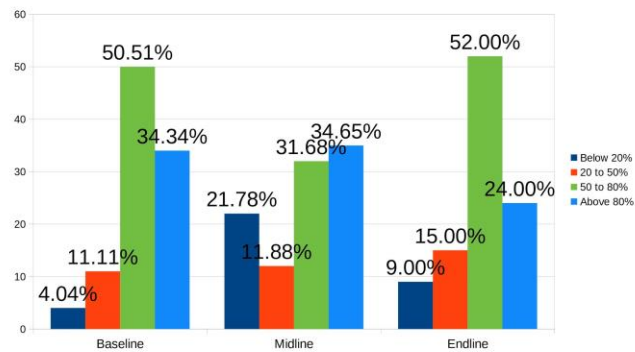


<b>English Overall</b>	Total	Below 20%	20-50%	50-80%	Above 80%	Absent	Left
Baseline	71	8	22	32	8	1	-
Midline	71	0	9	27	33	2	-
Endline	71	0	12	37	17	-	5

For a detailed managers report & academic analysis for AXF Goregaon, please [click here](#)

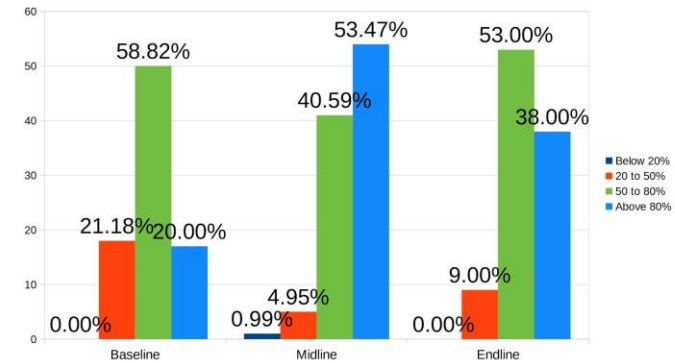
AXF JUHU

Juhu Maths Baseline,Midline & Endline Comparison



Maths – Overall	Total	Below 20%	20-50%	50-80%	Above 80%	Absent	Left
Baseline	152	5	14	63	43	27	-
Midline	152	31	17	45	49	2	8
Endline	152	9	15	54	25	11	38

Juhu English Baseline,Midline & Endline Comparison



English Overall	Total	Below 20%	20-50%	50-80%	Above 80%	Absent	Left
Baseline	152	0	27	74	26	3	-
Midline	152	1	6	54	71	12	8
Endline	152	0	9	57	41	7	38

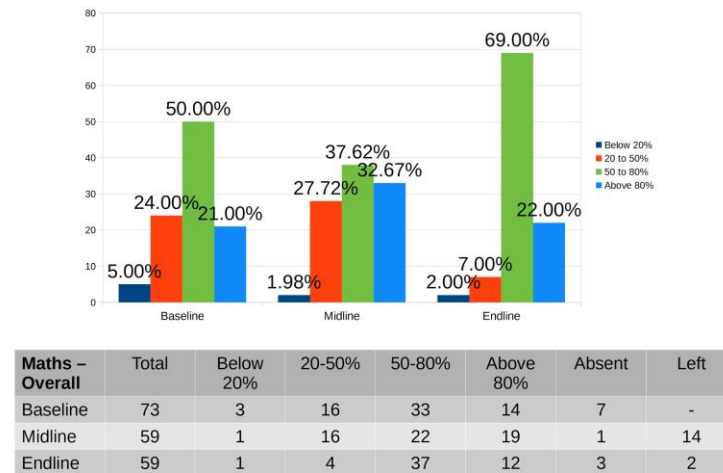
For a detailed managers report & academic analysis for AXF Juhu, please [click here](#)

**AXF MALAD**

### Malad Afternoon English Baseline, Midline & Endline Comparison



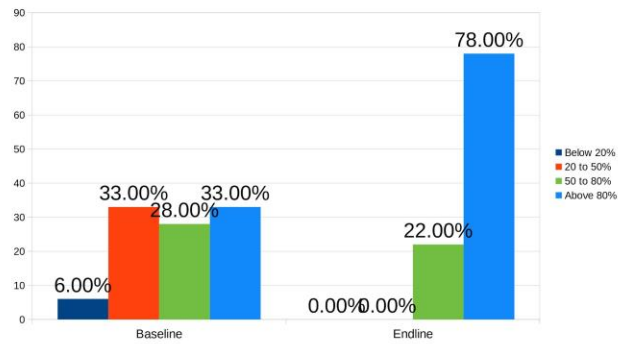
### Malad Maths Baseline, Midline & Endline Comparison



For a detailed managers report & academic analysis for AXF Malad, please [click here](#)

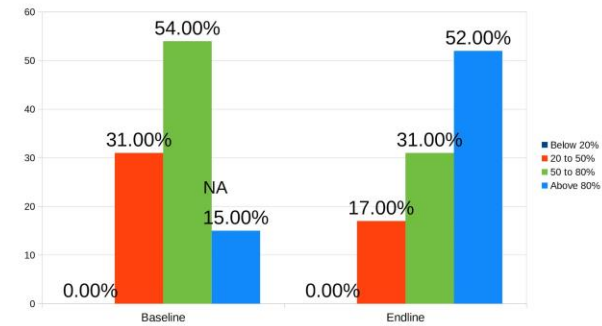
**AXF MULUND**

Mulund English Baseline,Midline & Endline Comparison



English Overall	Total	Below 20%	20-50%	50-80%	Above 80%	Absent	Left
Baseline	56	3	18	15	18	2	-
Midline	NA	NA	NA	NA	NA	NA	NA
Endline	56	0	0	9	32	15	-

Mulund Maths Baseline,Midline & Endline Comparison



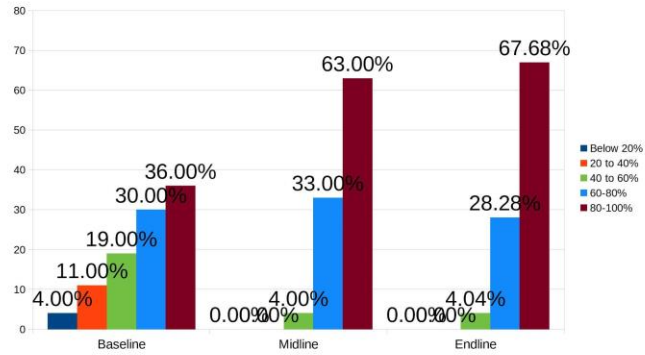
Maths – Overall	Total	Below 20%	20-50%	50-80%	Above 80%	Absent	Left
Baseline	56	0	17	29	8	2	-
Midline	NA	NA	NA	NA	NA	NA	NA
Endline	56	0	7	13	22	14	-

For a detailed managers report & academic analysis for AXF SC BKE, please [click here](#)

**AXF POWAI (morning batch)**

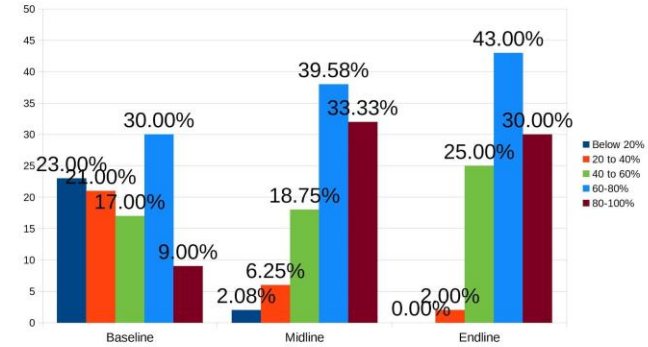


Powai Morning Maths Baseline, Midline & Endline Comparison



Maths – Overall	Total	Below 20%	20-40%	40-60%	60-80%	80-100%	Absent	Left
Baseline	53	2	6	10	16	19	-	-
Midline	53	0	0	2	16	31	3	1
Endline	53	0	0	2	13	31	2	5

Powai Morning English Baseline, Midline & Endline Comparison

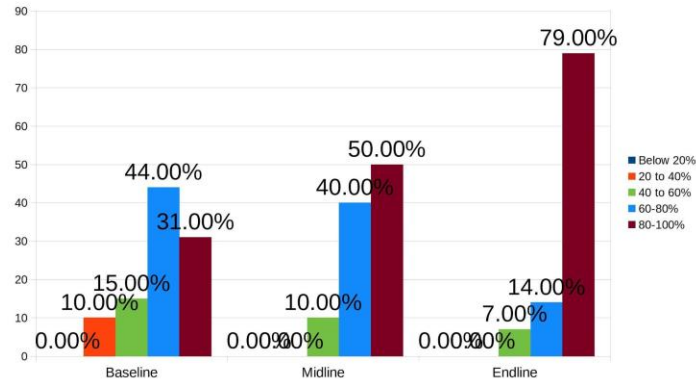


English Overall	Total	Below 20%	20-40%	40-60%	60-80%	80-100%	Absent	Left
Baseline	53	12	11	9	16	5	-	-
Midline	53	1	3	9	20	16	3	1
Endline	53	0	1	11	19	13	4	5

For a detailed managers report & academic analysis for AXF Powai, please [click here](#)

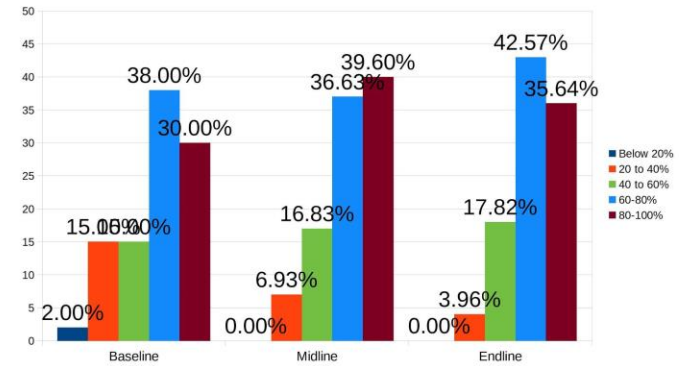
**AXF POWAI (afternoon batch)**

### Powai Afternoon Maths Baseline, Midline & Endline Comparison



<b>Maths – Overall</b>	Total	Below 20%	20-40%	40-60%	60-80%	80-100%	Absent	Left
Baseline	41	0	4	6	17	12	2	-
Midline	41	0	0	3	12	15	1	10
Endline	41	0	0	2	4	23	1	11

### Powai Afternoon English Baseline, Midline & Endline Comparison

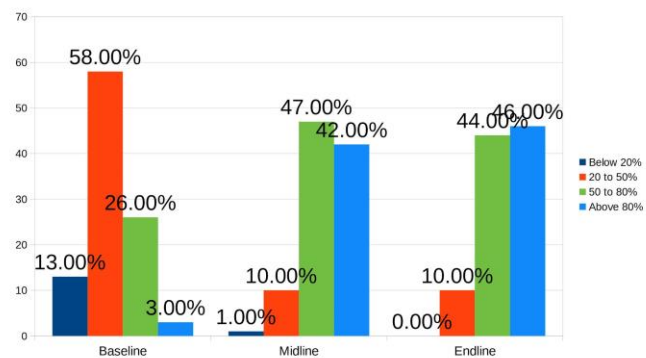


<b>English Overall</b>	Total	Below 20%	20-40%	40-60%	60-80%	80-100%	Absent	Left
Baseline	41	1	6	6	15	12	1	-
Midline	41	0	2	5	11	12	1	10
Endline	41	0	1	5	12	10	2	11

For a detailed managers report & academic analysis for AXF Powai, please [click here](#)

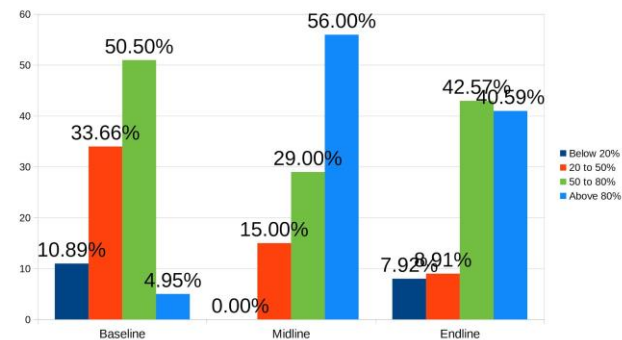
**AXF SEWRI**

## Sewri Maths Baseline, Midline & Endline Comparison



Maths – Overall	Total	Below 20%	20-50%	50-80%	Above 80%	Absent	Left
Baseline	144	18	79	36	4	6	1
Midline	144	1	10	48	43	5	37
Endline	144	0	10	44	45	8	37

## Sewri English Baseline, Midline & Endline Comparison

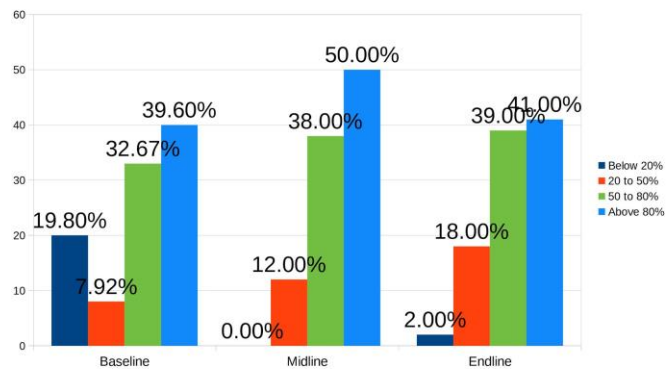


English Overall	Total	Below 20%	20-50%	50-80%	Above 80%	Absent	Left
Baseline	144	15	47	71	7	3	1
Midline	144	0	14	28	53	12	37
Endline	144	7	30	28	26	16	37

For a detailed managers report & academic analysis for AXF SC BKE, please [click here](#)

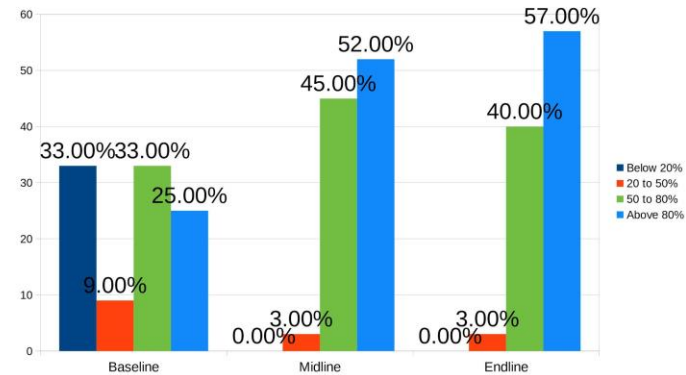
**AXF VERSOVA**

Versova English Baseline, Midline & Endline Comparison



English Overall	Total	Below 20%	20-50%	50-80%	Above 80%	Absent	Left
Baseline	103	18	7	30	37	11	-
Midline	103	0	9	28	37	1	28
Endline	103	1	12	26	27	3	34

Versova Maths Baseline, Midline & Endline Comparison

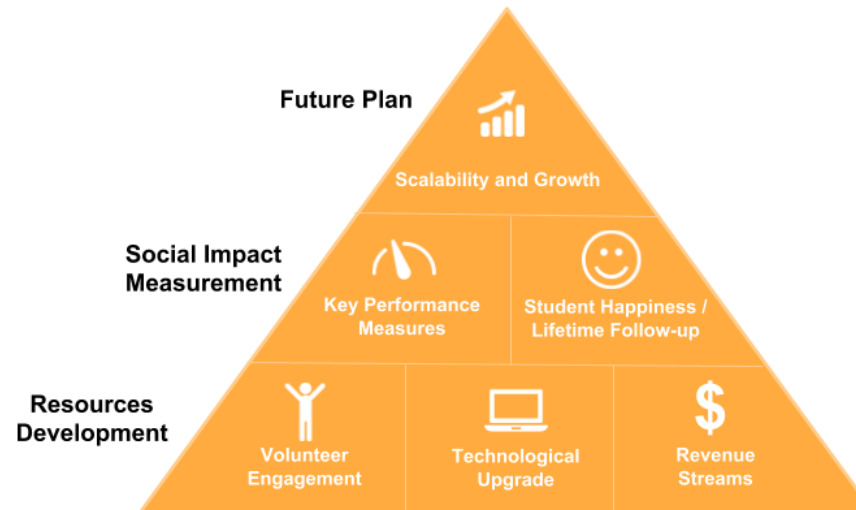


Maths – Overall	Total	Below 20%	20-50%	50-80%	Above 80%	Absent	Left
Baseline	103	34	9	34	26	-	-
Midline	103	0	2	33	38	2	28
Endline	103	0	2	26	37	4	34

For a detailed managers report & academic analysis for AXF SC BKE, please [click here](#)

## The Future:





AXF plans to add 500 new students to its programs year on year for the next 3 years. To reach these students, and to help break the cycle of limited career opportunities, social mobility, and consequently community economic well-being, Angel Xpress needs to find grants to fund its program and resource expenses.

The expansion will be undertaken under the “Free Franchise” model developed for scalability and sustainability of the Free Learning Center Program. Under this format AXF provides training and resources to citizen groups who adopt the free learning center format to run the community service program in their neighbourhood. This modification has been tested over two years in 7 locations as an initial pilot under the AXF umbrella and is successfully catering to 1000 students already.

Under the expansion plan, 500 students per year and new locations will be added over the next 3 years to the free franchise format taking the number to 2500 students, besides the 1000 students at 10 AXF managed centers .

## FINANCIAL REPORT

Our budget covers a proportionate cost of program and administrative teams, office expenses, travel, training & meetings, teaching & learning resources for teachers and students, giveaways for volunteers and students (tshirts, bags), outing and exposure visits for students, proportionate expenses for volunteer engagement programs like the annual day and resources for setting up and running of new centers.

Please click [here](#) to read our financial reports

## ANNUAL REPORT 2017-18

Please access to our previous annual report [here](#).

## LATEST AXF PRESENTATION

To access AXF latest showcase presentation click [here](#)

## OUR SUPPORTERS



**VOLTAS LIMITED**





# THE END

Website: [www.angelxpress.org](http://www.angelxpress.org)

LinkedIn: <https://www.linkedin.com/in/anubha-sharma-3929023/>

Facebook: <https://www.facebook.com/AngelXpressFoundation/>

Instagram: <https://www.instagram.com/angelxpressfoundation>

Twitter: <https://twitter.com/angelxpressorg>

----- page left blank intentionally-----